



INNOPART

CARTS & MORE



Table of contents

3	Study results
5	Ilona-phlebotomy cart
6	Onni-phlebotomy cart
8	Keisi-phlebotomy cart
10	Husky-phlebotomy cart
12	Oiva-ward trolley
14	Saaga-ward trolley
15	Accessories
18	Our story
19	Our values



Using Innopart products makes sampling more efficient and frees up time



Ergonomic and high-quality sampling trolleys make work more efficient both in the sampling room and, on the ward rounds. According to our analysis, the investment in Innopart products pays for itself within a few weeks and frees up staff time for other tasks.

Customer focus is one of Innopart's core values. Many of our product development ideas come directly from our customers, as the best knowledge of how products work is gained by using them in our daily work. To better understand the benefits of using our products, in autumn 2022 we asked our customers and potential customers to complete a survey on product ergonomics, adaptability and how well the products support their activities. We were also particularly interested in how suitable products can save time on the ward round and, in the sampling room. The impact analysis compared laboratory staff using only or partly Innopart products with those using non-Innopart products.

Innopart products pay for themselves within a few weeks

High quality tools are often a major factor in saving employee time. When workers have access to appropriate sampling trolleys, they can perform their tasks faster and more efficiently. According to the analysis, Innopart products clearly free up time both in the sampling room and on the ward rounds.

Survey responses indicate that

the use of Innopart products in the sampling room

- increases capacity by up to **50 %**.
- saves **21%** of time per customer.
- supports efficient working **43%** better than other products.

On the ward round, the use of Innopart products

- reduces the time needed to prepare a ward round by up to **50%**.
- saves **15%** of time per customer.
- supports efficient working **32%** better than products from other manufacturers.

As the time savings achieved by using Innopart products is up to **21%**,
**the payback time for the company's sampling trolley is
1 month and 3 weeks.**

An Innopart product is therefore an investment that pays for itself quickly. By freeing up working time with the right tools, for example, customers can be better served or more samples can be taken during the day. By saving time from routine sampling, the same number of staff can serve a larger number of customers. This is a significant advantage as the availability of qualified staff is expected to remain a challenge in the coming years. The increased efficiency also translates into space savings, as a larger number of clients can be served in the same sampling room. Time saved means money saved, as a smoother work sheet reduces the need for extra man-hours and leads to better results. Therefore, investing in the right tools brings a range of benefits to your business.

The impact analysis was carried out in cooperation with Kasve Oy, a specialist organisation. The questionnaire was sent by e-mail to over 100 people and interviews were also conducted by telephone. A total of 21 responses were received and a total of 3340 samples are taken during the day in the sampling rooms and 1340 samples during ward rounds in the respondents' units.

Ilona-phlebotomy cart

Height adjustment enables better work ergonomic

The height adjustment, together with the features of the previous sampling trolleys, allows the product to be adapted to the needs of each user and to the situations encountered during blood sampling.

The Ilona-phlebotomy cart is light to move and ergonomic. Everything you need is within arm's reach, reducing the amount of twisting and turning you need to do to a minimum. The racks for disinfectant bottles, clinical waste containers, and rubbish containers can be placed freely all around the cart, meaning that you can adapt it to best suit your tasks.



The Ilona-phlebotomy cart is customizable to the changing needs of customers

The Ilona phlebotomy cart can be customized for different sampling needs. A big (60600_3) or a small (60600_2) tube shelf can be placed on the cart. A big tube shelf has a movable divider that allows the tube shelf to be adjusted to fit the tube packages in use. The angle and the depth of the tube shelf are adjustable. You can also order Keisi phlebotomy cart without a tube shelf (60600_1).

Technical information

- Width 710 mm, depth of the tabletop 400 mm and height 675 mm.
- Linak electrically adjustable 150 mm height adjustment.
- The cart is lifted from under the drawers.
- The cart has own, long-lasting battery.
- The cart's battery is charged from a 230-volt wall socket.
- The height of the cart's tabletop can be adjusted between 675-825 mm.
- The total height of the cart with the big tube shelf can be adjusted between 1045-1195 mm.
- The total height of the cart with the small tube shelf can be adjusted between 945-1095 mm.



Onni-phlebotomy cart

The new phlebotomy cart supports customer's lean processes

Customer-orientation and user-friendliness have been the key features in the product development process of Onni-phlebotomy cart. The cart is compact in size and the equipment is arranged in such way that the operation is optimal in the sampling situation. Each sampling step and the sampler's trajectory have been carefully considered.

Onni cart support a smooth and efficient sampling process, which at the same time strengthens the customer's experience of a calm and a pleasant laboratory visit.



73000 Onni-phlebotomy cart - For optimal sample collection

- All supplies have their own place, which makes the sampling process efficient and clear.
- Tubes and sampling supplies are in the same level and ergonomically within arm's reach.
- A box for sampling supplies is at the front of the cart. The tube packages are placed behind the sampling box. Dividers can be placed in the sampling box every 55mm intervals.

- The idea is to fill the sampling box with sampling supplies in the sampling order. The sampling box is removable, so you can lift it up and rotate 180 degrees. Thus, the cart is easily modified for left- and right-handed users.
- Above the sampling box is a sliding level for tube rack and tube mixer. A tube rack for ten tubes is delivered together with the cart.
- Below the sampling box is a drawer. In the drawer, you can store supplies you don't need all the time or with every customer.
- Racks for clinical waste containers, waste containers, disinfectant bottle, skin cleanser and disposable gloves package are positioned on both ends of the phlebotomy cart.



Onni-phlebotomy cart

Great for ergonomics

- The Onni phlebotomy cart is light and height adjusted.
- The cart can easily move from the upper handle.
- Linak electrically adjustable 150 mm height adjustment.
- The cart has own, long-lasting battery.
- The cart's battery is charged from a 230-volt wall socket.
- The height of the cart is adjustable between 820-1020 mm, which also allows standing work.

You can also order Onni-phlebotomy cart without height adjustment

- 73100 Onni-phlebotomy cart without height adjustment
- 73000 Onni-phlebotomy cart with Linak height adjustment



Dimensions of the Onni-phlebotomy cart

- Width 590 mm, depth 400 mm and height 820-1020 mm.
- Without height adjustment the height of the cart is 850 mm.
- Internal dimensions of the tube storage: W 520 / D 195 / H 120 mm.
- Three 150 x 180 mm size tube packages (100 tubes per package) or five 95 x 185 mm size tube packages (50 tubes per package) fit to the tube storage, for example.
- Dimensions of the sampling box: W 575 / D 152 / H 80 mm.
- Dimensions of the sliding level: W 255 mm x D 165 mm.
- Internal dimensions of the drawer: W 490 / D 315 / H 95 mm.

72200 Onni waste cart

- Small and light cart for clinical waste container and waste bin.
- The waste cart allows a large clinical waste container to be used smoothly and safely in the sampling situation.
- Waste bin 10l is delivered together with the waste cart.
- Dimensions: Width 590 mm, depth 335 mm and height 495 mm.
- Max. dimensions for a clinical waste container in the waste cart are W 388, D 280 and H 341 mm.

READ WHAT OTHERS SAY ABOUT THE PRODUCT AND CUSTOMIZE THE PRODUCT TO YOUR NEEDS IN OUR WEBSHOP BY SCANNING THE QR-CODE.



Keisi-phlebotomy cart

Flexibility is a prerequisite for ergonomic work

The Keisi phlebotomy cart is light to move and ergonomic. Everything you need is within arm's reach, reducing the amount of twisting and turning you need to do to a minimum. The racks for disinfectant bottles, clinical waste containers, and rubbish containers can be placed freely all around the cart, meaning that you can adapt it to best suit your tasks. The Keisi phlebotomy cart is easy to use whether you're left- or right-handed. Designed in collaboration with healthcare professionals, the Keisi phlebotomy cart makes routine sample collection in hospitals and health centres easy and smooth.



Easily adaptable phlebotomy cart for small and large sampling needs

Eight cart models ensure that the cart is suitable for wide range of sampling needs. A big or a small tube shelf can be placed on the cart. A big tube shelf has a movable divider that allows the tube shelf to be adjusted to fit the tube packages in use. The angle and the depth of the tube shelf are adjustable. You can also order Keisi cart without a tube shelf.

Additional space is provided by the writing surface which is placed inside the cart. Retractable writing surface can be pulled to either the right or left side of the phlebotomy cart.



Dimensions of the Keisi-phlebotomy cart

- W 710 mm, depth of the tabletop 400 mm and height 680 mm.
- The height of the cart with a big tube shelf: 1050 mm/D 460 mm.
- The dimensions of the big tube shelf:
W 725 mm/D 320 mm/H 60 mm.
- The height of the cart with a small tube shelf: 950 mm/D 450 mm.
- The dimensions of the 71010 small tube shelf: W 725 mm/ L 180 mm / H 60 mm.
- Visible dimensions of the retractable writing surface pulled to the right or left side of the cart: W 300 mm / D 245 mm.
- Dimensions of a sliding drawer: W 270 mm/D 320 mm/H 215 mm.



Keisi-phlebotomy cart

Sustainable and ecological phlebotomy cart

- Keisi-phlebotomy cart is an ecological and long-lasting purchase.
- The cart is made of metals such as steel and aluminium. The cart is painted with antimicrobial powder coating which help combat the bacterial growth.
- The tabletop is a tray which can be detached and easy to wash. The tray withstands high washing temperatures (93°C) and disinfectant washing.
- High quality and lockable ball bearing casters (125mm), the cart can be moved smoothly from one side of the sampling chair to another.
- Wheel diameter 125 mm



The Keisi-phlebotomy cart is customizable to the changing needs of customers

A wide selection of accessory racks is available for the Keisi-phlebotomy cart. We have racks for clinical waste-, and rubbish containers, disinfectant bottles, disposable gloves package, sampling stickers and forms. The racks can be placed freely all around the cart, so it adapts quickly to the right- and left-handed user.

Separate racks allow the purchase of a rack only if, for example, the design or model of the clinical waste container changes.

Customer feedback

"We are very satisfied with the cart! We like that it fits everything that we need during a blood sample collection. It doesn't take much space, and we can easily move it around if we need to. We also like that big shelf!"

Department of medical biochemistry, St. Olav's Hospital, Trondheim, Norway / Instagram: @bioingeniorene

READ WHAT OTHERS SAY ABOUT THE PRODUCT AND CUSTOMIZE THE PRODUCT TO YOUR NEEDS IN OUR WEBSHOP BY SCANNING THE QR-CODE.



Husky-phlebotomy cart

A compact cart for small and large sampling needs

The phlebotomy cart is light to move from one side of the sampling chair to another. Due to its small size, the cart is suitable also for small sample collection rooms. Everything you need is within arm's reach, reducing the amount of twisting and turning you need to do to a minimum. The racks for disinfectant bottles, clinical waste containers, and rubbish containers can be freely positioned on both ends of the phlebotomy cart, whereupon the cart may be modified to be most applicable to your work. The Husky phlebotomy cart is suitable for both right- and left-handed users.



An easily adaptable phlebotomy cart

Husky-phlebotomy cart has three large and lockable, robust sliding drawers. The drawers can be separated into sections with dividers. In the drawers, the sampling supplies are protected from the customer's gaze, which helps to calm the customer's perception of the sampling situation.

A big or a small tube shelf can be placed on the cart. A big tube shelf has a movable divider that allows the tube shelf to be adjusted to fit the tube packages in use. The angle of the tube shelf are adjustable. You can also order Husky phlebotomy cart without a tube shelf.

Small and agile structure: convenient for many purposes

The Husky-cart is easy to move and compact in size. Spacious and lockable drawers allow the cart to be used in many different locations. In addition to blood sample supplies, the cart is well suited for storing gynecological supplies, for example.

The design of all our products is the same style, so they fit well in the same space. For example, the Keisi or Onni-carts for blood sample supplies and the Husky cart for gynecological supplies.



Husky-phlebotomy cart

Dimensions of the Husky-phlebotomy cart

- Width 710 mm, depth of the tabletop 400 mm and height 680 mm.
- The height of the cart with a big tube shelf is 1050 mm and depth 460 mm.
- The dimensions of the 60516 big tube shelf: W 725 mm, L 320 mm and H 60 mm.
- The height of the cart with a small tube shelf is 950 mm and depth 450 mm.
- The dimensions of the 71010 small tube shelf: W 725 mm, L 180 mm and H 60 mm.
- Internal dimensions of a sliding drawer: Width 525 mm, depth 315 mm and height 145 mm.



Sustainable and ecological choice

- Husky-phlebotomy cart is an ecological and long-lasting purchase.
- The cart is made of metals such as steel and aluminium. The cart is painted with antimicrobial powder coating which help combat the bacterial growth.
- High quality and lockable ball bearing casters (125mm), the cart can be moved smoothly from one side of the sampling chair to another.
- Wheel diameter 125 mm

Customer feedback

We had following requirements for a phlebotomy table: light to move, room for a lot of equipment, easy to clean, doesn't take too much space and can be adjusted for both left- and right-handed users. Husky-sample collection cart fulfilled all our expectations. We are very satisfied.

Väsby Läkargrupp, Sweden

READ WHAT OTHERS SAY ABOUT THE PRODUCT AND CUSTOMIZE THE PRODUCT TO YOUR NEEDS IN OUR WEBSHOP BY SCANNING THE QR-CODE.



Oiva-ward trolley

When you require ergonomics and versatility

A wide range of accessories enables the Oiva trolley to be used in many different work tasks such as sample collection, cannulation, wound care, and dispensing medicines. During the design of the ward trolley, particular attention was paid to ergonomics and versatility. This is shown, among others, in the freely positioning of racks, due to which it is suitable for both right- and left-handed users. Ergonomics are also contributed to through push handles, which are set at two different heights (930 mm and 1050 mm). Thus, the trolley is suitable for the needs of users of different heights.



For many purposes

The equipment can be customized to the frame of the Oiva ward trolley according to the customer's needs. 1-3 trays can be positioned in the frame. The trays are available in 45 mm, 60 mm, and 100 mm depths. The trolley frame has six attachment points where the trays can be placed. Thus, the heights of the trays are adjustable to suit the user's work. There is a rail around the 60 mm and 100 mm deep trays on which the accessory racks can be placed.

We have accessory racks for clinical waste containers, waste containers, disinfectant bottles, skin cleanser bottles, disposable gloves, tape rolls, mobile printers, mobile phones, sampling stickers, and other forms.

Optimal trolley for sample collection in hospital wards

The design of the Oiva-ward trolley has taken into account the changing needs of department sampling. An additional level above the tray provides space for mobile sampling equipment. An additional level is suitable for a mobile printer, mobile phone, and tube mixer. You can also add a tape roll holder to the additional level.

READ WHAT OTHERS SAY ABOUT THE PRODUCT AND CUSTOMIZE THE PRODUCT TO YOUR NEEDS IN OUR WEBSHOP BY SCANNING THE QR-CODE.



Oiva-ward trolley

Oiva-ward trolley in sample collection room

"Oiva - the sampling trolley is easy to move and small enough for work ergonomics. The height of the trays is adjustable, and the racks can be positioned around the trolley, so the trolley can be comfortably modified to suit the sampler. When the sampler changes at the work station, the trolley can be quickly moved from one side of the sampling chair to another, making it suitable for both right-handed and left-handed users. There will be no unnecessary reach when all accessories are close by. Thanks to its small size, the Oiva trolley is ideal for even the tightest sampling spaces."

Medical center, Aava Vantaanportti, Vantaa, Finland



Technical information of Oiva-ward trolley

- The width of the trolley is 430 mm, the length is 560 mm and the height of the top tray is 850 mm.
- Push handles at two heights: 930 mm or 1050 mm.
- Internal dimensions of a tray: W 309 mm, L 388 mm.
- The trolley has high-quality and lockable, ball-bearing casters (Ø 100 mm) that make it very easy to move.
- The trays are completely removable and withstands high washing temperatures (93°C) and disinfectant washing.
- The trays are made of aluminium and painted with antimicrobial powder coating which help combat the bacterial growth. The trolley frame is made of chromed steel.

Sample collection in hospital wards with Oiva-ward trolley

"The Oiva trolley is sturdy and agile. Ergonomics has been taken into account in the design. Thanks to three levels the small space can hold a lot of stuff, even a portable blood analyser.

The 3-pod chair can be firmly attached to the trolley frame. Good customer service, domestic and high-quality products."

Clinical chemistry, Satakunta regional hospital, Pori, Finland



Saaga-ward trolley

Small and agile

The Saaga ward trolley is suitable for many different uses. The trolley is easy to move and due to its small size, it is very suitable for even cramped spaces. Deep trays keep the goods in place even in a hurry. Ergonomics are promoted by push handles set at two different heights (870 mm and 1000 mm). Therefore, the trolley is suitable for the needs of both shorter and taller users. In addition, racks for forms, sampling stickers, clinical waste containers, waste containers, disinfectant bottles, skin cleanser bottles and, disposable gloves can be placed on the edges of the tray and under the push handles, making it easy to modify the trolley for both right- and left-handed users.



Technical information of Saaga-ward trolley

- The width of the trolley is 400 mm, the length is 550 mm and the height 1000 mm.
- Push handles at two heights: 870 mm or 1000 mm.
- Internal dimensions of a tray: W 280 mm, L 300 mm and H 100 mm.
- The trolley has high-quality, ball-bearing casters (Ø 75 mm) that make it very easy to move.
- Trays and tray holders are detachable and easy to wash
- The trays are made of ABS plastic and the trolley frame is made of chromed steel.

Customer feedback

Saaga-ward trolley is light to move and easy to keep clean. The trolley is very agile and narrow enough to fit in between beds on the ward. Two pushing handles has proven to be a good choice in practice.

Seinäjoki central hospital, Finland

READ WHAT OTHERS SAY ABOUT THE PRODUCT AND CUSTOMIZE THE PRODUCT TO YOUR NEEDS IN OUR WEBSHOP BY SCANNING THE QR-CODE.



Accessories

Racks for disposable gloves, hand sanitizer and detergent bottles



Rack for one bottle

- Product number 60560
- Dimensions of the hole:
W 75 x L 75 mm
- The minimum height of a bottle is 100 mm



Rack for two bottles

- Product number 60561
- Dimensions of the holes:
2 x 75mm
- The minimum height of a bottle is 100 mm



Rack for disposable gloves package

- Product number 70500
- Dimensions: 245 x 120 x 65 mm

Racks for clinical waste and waste bins



Rack for 2-3 liters clinical waste container

- Product number 60525
- Dimensions of the hole:
W 180 x D 100 mm
- The clinical waste container is lowered into the rack on the lid
- The rack is suitable for e.g.
• Sharpsafe 2 and 3 l



Rack for 3-9 liters clinical waste container

- Product number 60526
- Dimensions of the hole:
W 154 x D 154 mm
- The clinical waste container is lowered into the rack on the lid
- The rack is suitable for e.g.
• Sarstedt euroMatic 3, 4, 6, 7 l
• CS Plus 5 & 6 l
• Sharpsafe 4, 7 ja 9 l



Rack for 10 liters clinical waste container

- Product number 60531
- Dimensions of the hole: W
192 x D 192 mm
- The clinical waste container is lowered into the rack on the lid
- The rack is suitable for e.g.
• ABM Italia S.p.A. Nursy clinical waste container 10 liters and CS plus 10 liters



Rack for 1,5 and 2 liters container

- Product number 60552
- Dimensions: W 255 x D 134
- The rack is suitable for e.g. Sarstedt multi-safe vario 1,5 l and 2 l



Rack for round container

- Product number 60553
- Diameter of the hole 127 mm
- The rack is suitable for e.g. Sarstedt Multi-Safe quick 1,5 l / 2,0 l / 2,5 l, Multi-Safe opti 1,7 l / 2,1 l / 3,0 l



Rack for 10 and 22 liters clinical waste container

- Product number 60532
- The rack is suitable for e.g. CS Plus clinical waste container 10 l and 22 l
- Nursy clinical waste container 3, 5 and 10 l



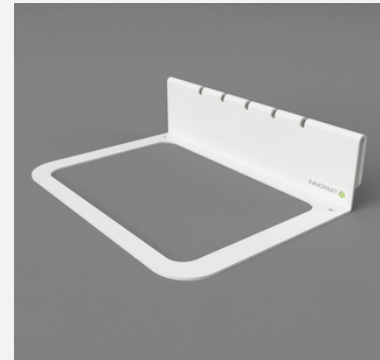
Rack and waste container 2 l

- Product number 60564
- Includes the rack and 2 liters waste container
- Dimensions: W 230 x D 90 x H 135 mm



Rack and waste container 10 l

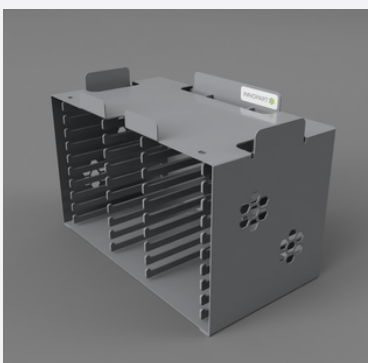
- Product number 60550
- Includes the rack and 10 liters waste container
- Dimensions: W 240 x D 160 x H 390 mm



Rack for clinical waste container

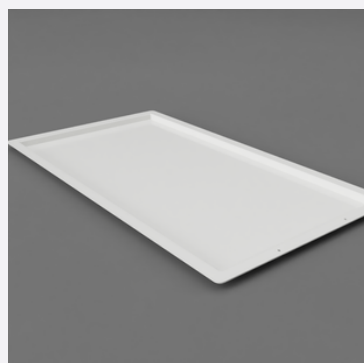
- Product number 60534
- Rack is assembled to the big tube rack
- W 210 x D 145

Other accessories



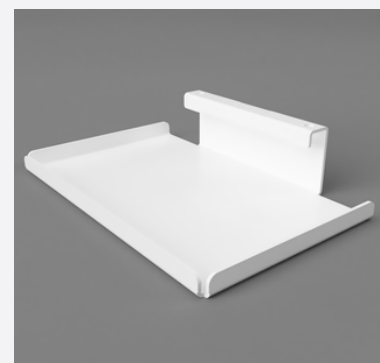
Locker for newborn's sampling cards

- Product number 70300
- 10 card places



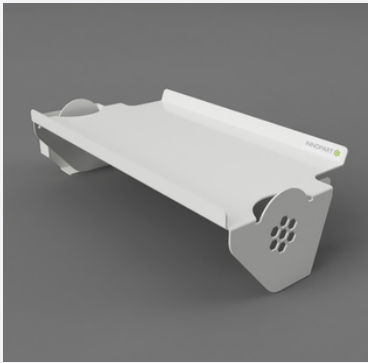
Extra tray for Keisi cart

- Product number 60513



A small extra level

- Product number 70017
- Dimensions: W 210 x L 147 x H 90 mm



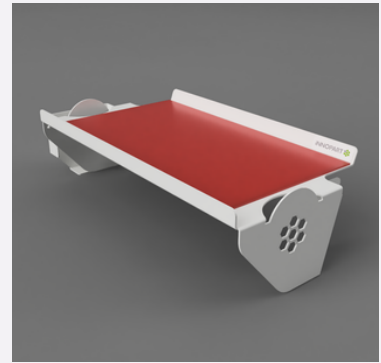
Extra level

- Product number 70003
- Additional level for e.g. tube mixer and mobile printer
- Dimensions W 340 x L 165 x H 90 mm
- The product fits to the Oiva-ward trolley



Tape roll holder

- Product number 70410
- Max. Width of the tape roll 20mm
- The tape roll holder is attached to the cart/trolley with two magnets.



Silicone mat for the extra level

- Dimensions W 300 x L 160 mm
- Plastic mat comes on top of the 70003 extra level
- Product code: 70013 red 70014 blue



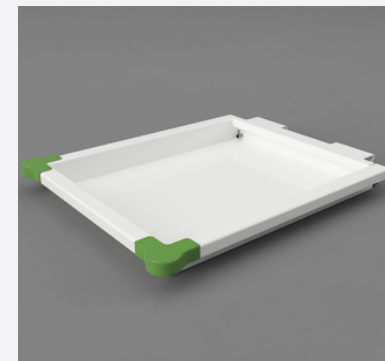
Tray depth 100 mm

- Product number 70009
- Extra tray for Oiva-ward trolley
- Inc. two corner protectors



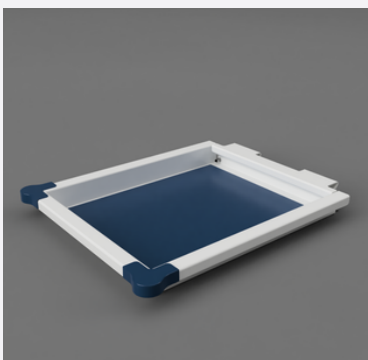
Tray depth 60 mm

- Product number 70001
- Extra tray for Oiva-ward trolley
- Inc. two corner protectors



Tray depth 45 mm

- Product number 70002
- Extra tray for Oiva-ward trolley
- Inc. two corner protectors



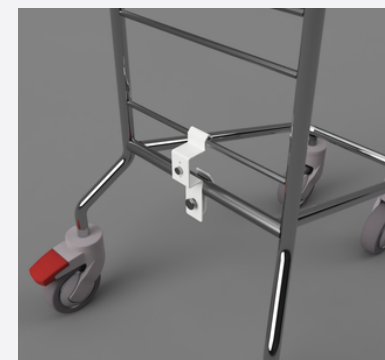
Red silicone mat for the Oiva tray

- Dimensions W 300 x L 350 mm
- Product code 70010 red, 70011 blue



Rack for sampling stickers, forms and phone

- Product number 70200
- Dimensions: W 190 x D 56 x 158 mm



A magnet rack for 3-POD chair

- The product fits to the Oiva-ward trolley

Our Story



The forerunner of sample collection

Innopart is a Finnish manufacturer of laboratory and hospital furniture. Customer orientation, ergonomics, safety and ecology are the values that guide our daily operations. We want to continuously develop new, innovative and responsibly manufactured product solutions for the changing needs of laboratories and healthcare sector.

Innopart Oy was established in 2010. Around this time, Ilmo Mässeli, who was making a sampling trolley at the request of laboratories, was about to retire. Ilmo saw that there would be more demand for the trolley, so he suggested its manufacture to Kimmo Niska, who worked in the technology industry. This opened up a unique opportunity for Kimmo to get involved in the manufacture of healthcare equipment. With his long experience in the technology industry, Kimmo saw a great opportunity to design an easily adaptable metal version of the previously plastic metal and wood sampling trolley. This is how Innopart's first product, the Keisi sampling trolley, was born. We've made small tweaks and developed new accessories over the years, but the main idea has remained the same.

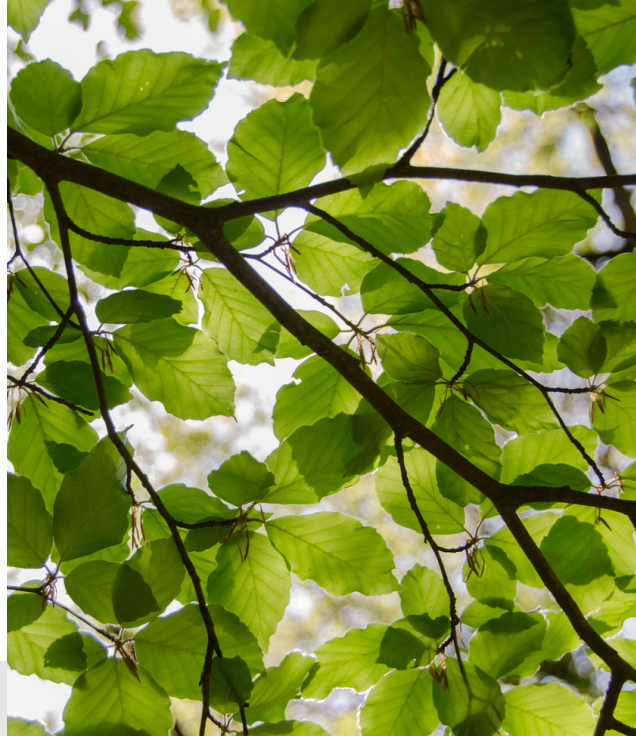
My journey at Innopart started in 2015, when I came to do an internship and write a thesis on product development and Nordic market mapping for a ward trolley.

Working in the healthcare sector felt like my thing straight away and, after my internship, I was offered the opportunity to stay at Innopart. In 2021, I decided to become an entrepreneur and buy a majority stake in Innopart Oy from Kimmo. My dream during my international business studies of exporting innovative products made in Finland in a responsible way has come true. I see that there is a lot of room for improvement in healthcare equipment, and we want to play our part in driving development forward in Finland and abroad.

There have been no changes in Innopart's operational activities since the change of ownership. There will be greater investment in product development and internationalisation. New product development ideas come mainly from our customers, so please feel free to contact us if you have an idea to develop either existing products or new product solutions. We are looking forward to developing new innovative product solutions for laboratories.

Kukka-Maaria Kenkkilä | CEO

Values at the heart of our operations



We manufacture high-quality phlebotomy carts and ward trolleys for hospitals and laboratories in Finland. Our high quality standards and continuous product development ensure that our products meet the high requirements of the healthcare sector in the best possible way. We develop our products together with healthcare professionals – resulting in the most effective solutions.

Innovative solutions for hospitals and laboratories

The needs of the healthcare sector are constantly changing. It is therefore of paramount importance that our products can meet these needs and other up-to-date requirements. In product development, we focus on continuous collaboration with our customers to bring the necessary features and innovations to our products.

When we work with healthcare professionals on product development, we also ensure that our trolleys are ideally suited to the desired environment and support ergonomic and efficient working practices. Cost-effectiveness is achieved through the long-life cycle of the trolleys and carts.

Customer focus is a matter of the heart

Alongside innovation, customer focus is one of the cornerstones of our business. It is important for us to act fairly and honestly and to stick to what we have agreed with our customers and stakeholders.

We are genuinely excited about what we do and want to be part of developing responsibly manufactured product solutions for laboratories and healthcare for a more sustainable tomorrow. We listen to our customers' needs and wishes with a keen ear to develop our products even better. For us, the product development process always starts with identifying customer needs: it's clear that the field knows best what the field needs.

Responsibility is about building a better tomorrow

Our company has a strong commitment to the principles of sustainable development. We actively seek to reduce the environmental impact of all our activities. It is important that our high-quality products are sustainable and long-lasting. As the main raw materials used in our trolleys are steel and various metals, once the product has reached the end of its life cycle, the manufacturing materials are fully recyclable. We also try to find subcontractors and other partners as close to Kauhava as possible. This avoids long, environmentally damaging transportation. The packaging materials we use are also recyclable and, where possible, made from recycled materials.



New



Watch our
product video
by scanning
the qr-code



Innopart Ltd

Kirjapainontie 8
62200 Kauhava
Finland
www.innopart.fi
info@innopart.fi